



Community Character Meeting #1

August 29, 2019

Community Character

Housekeeping

Involvement:

- The Community Character will be the deliberating body. Questions will be taken from those attending as deemed appropriate and timely.

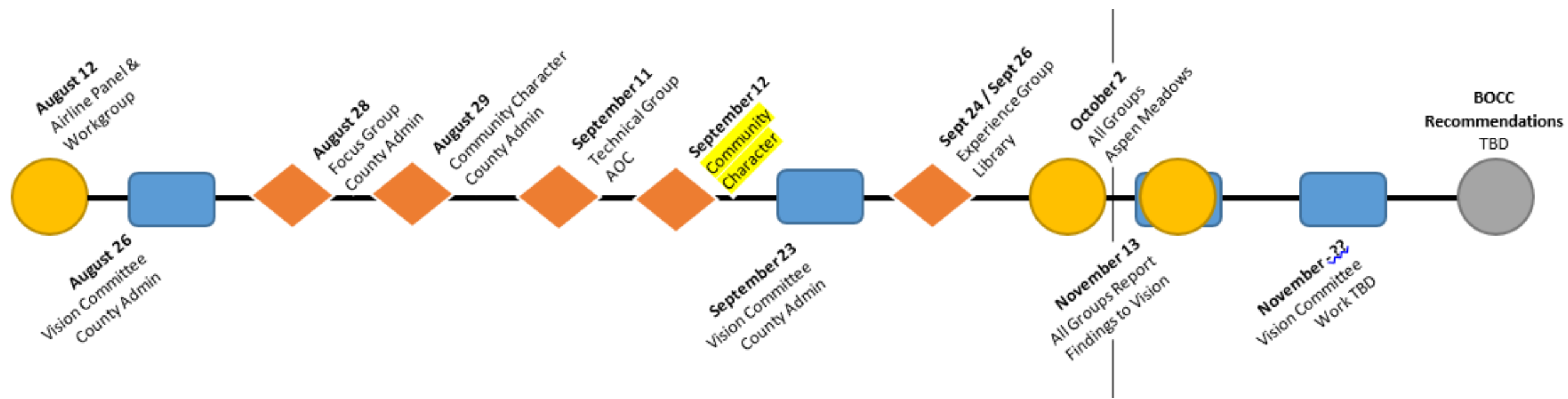
Member participation:

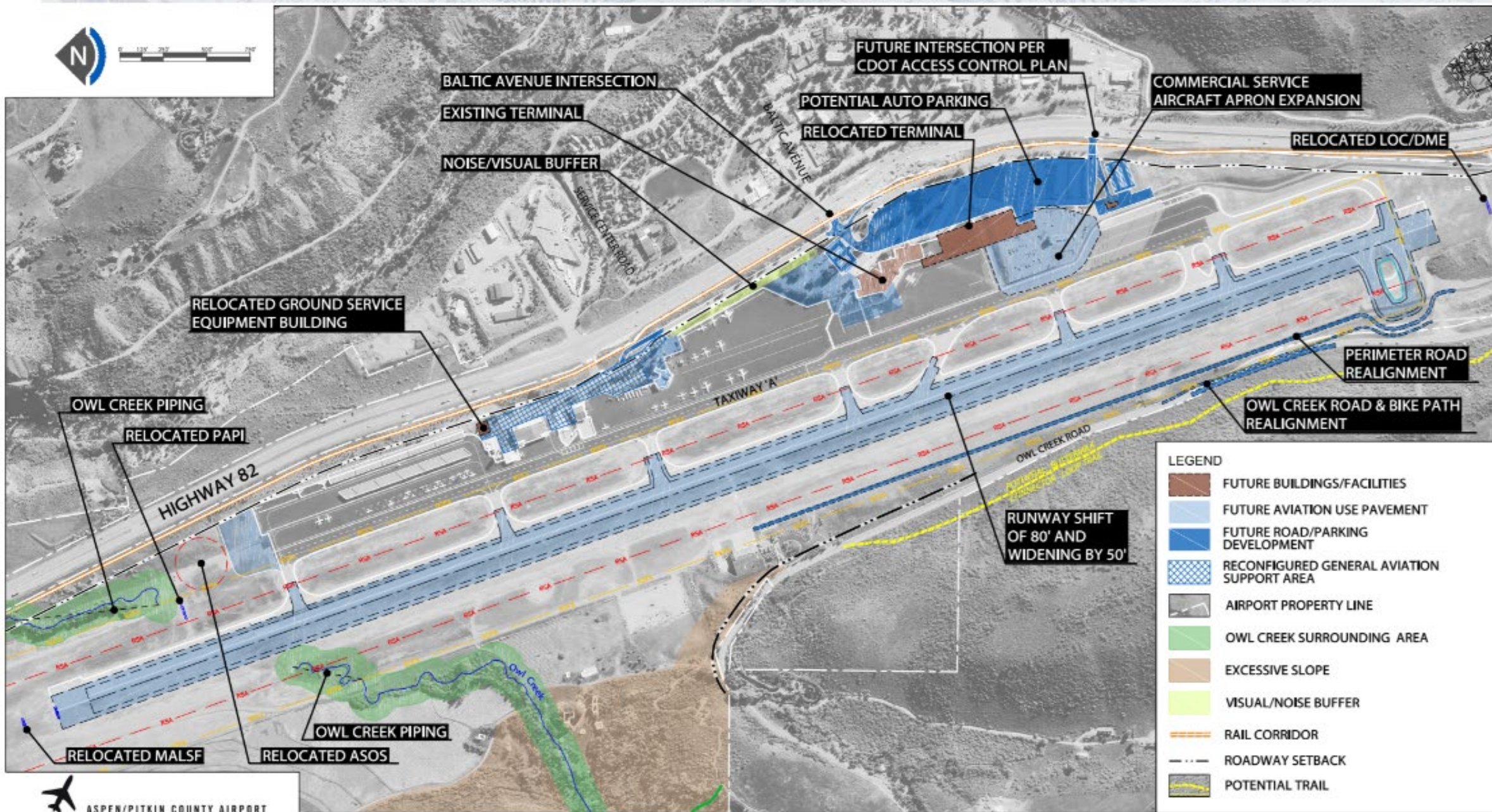
- Use of name tents.

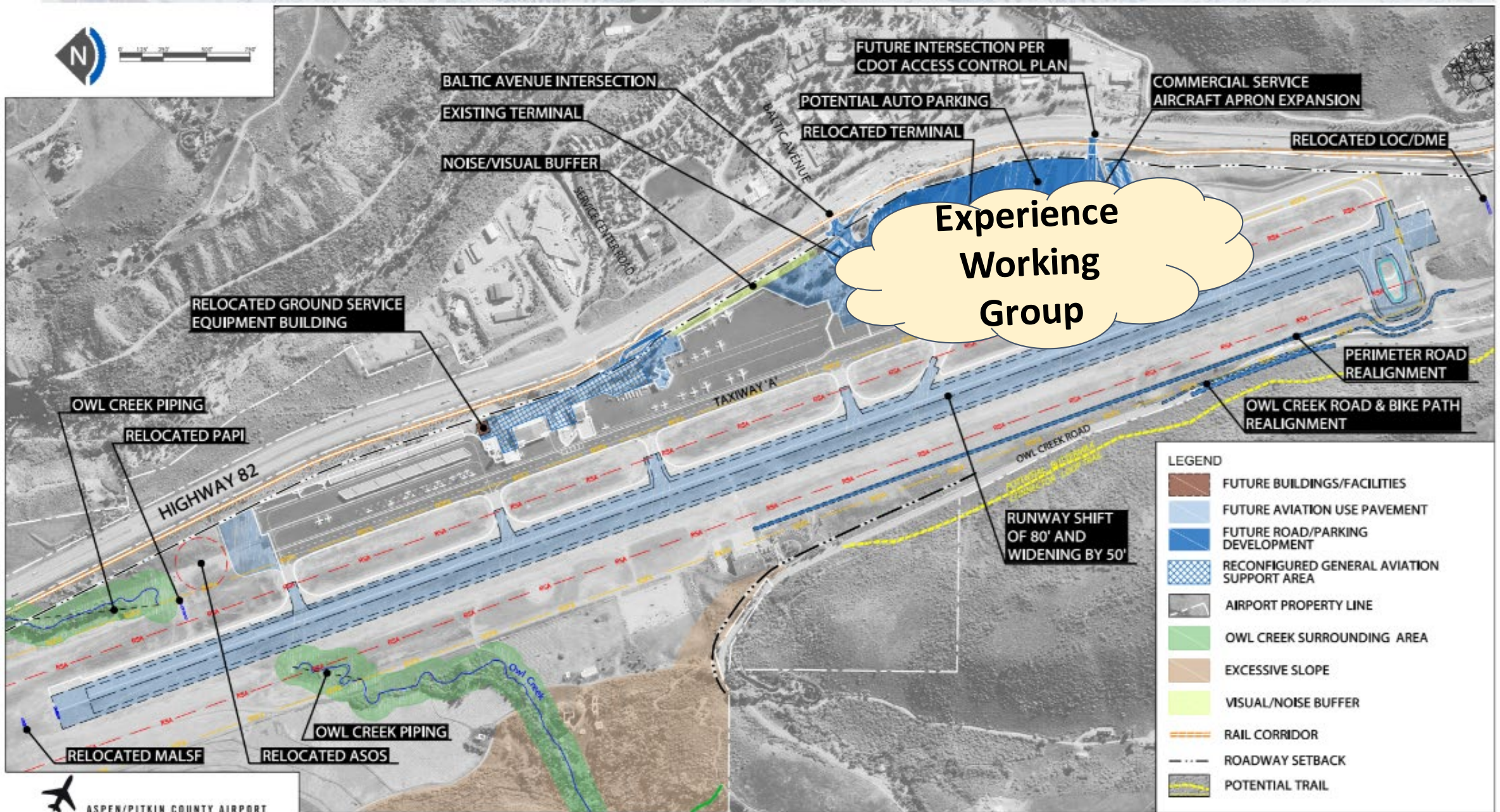
Website:

- Taskforce and other working groups will have their own sites.
- Ours and other working groups meeting dates will be posted so that others and public can attend if desired.
- Data related to the task at hand will be placed under their particular headings.
- Support data (general) still remain on the web where it resides today.

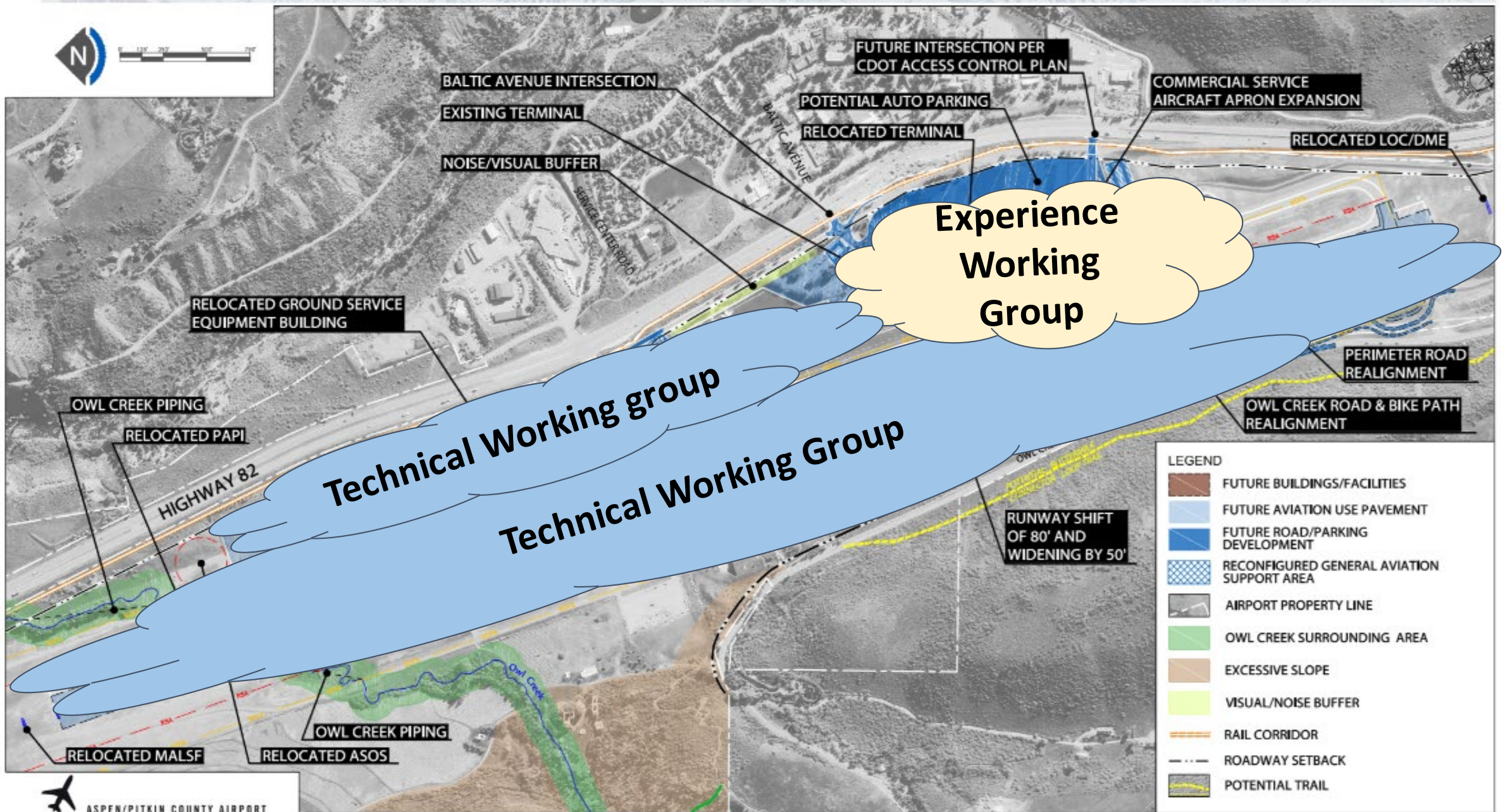
Tentative Process Timeline

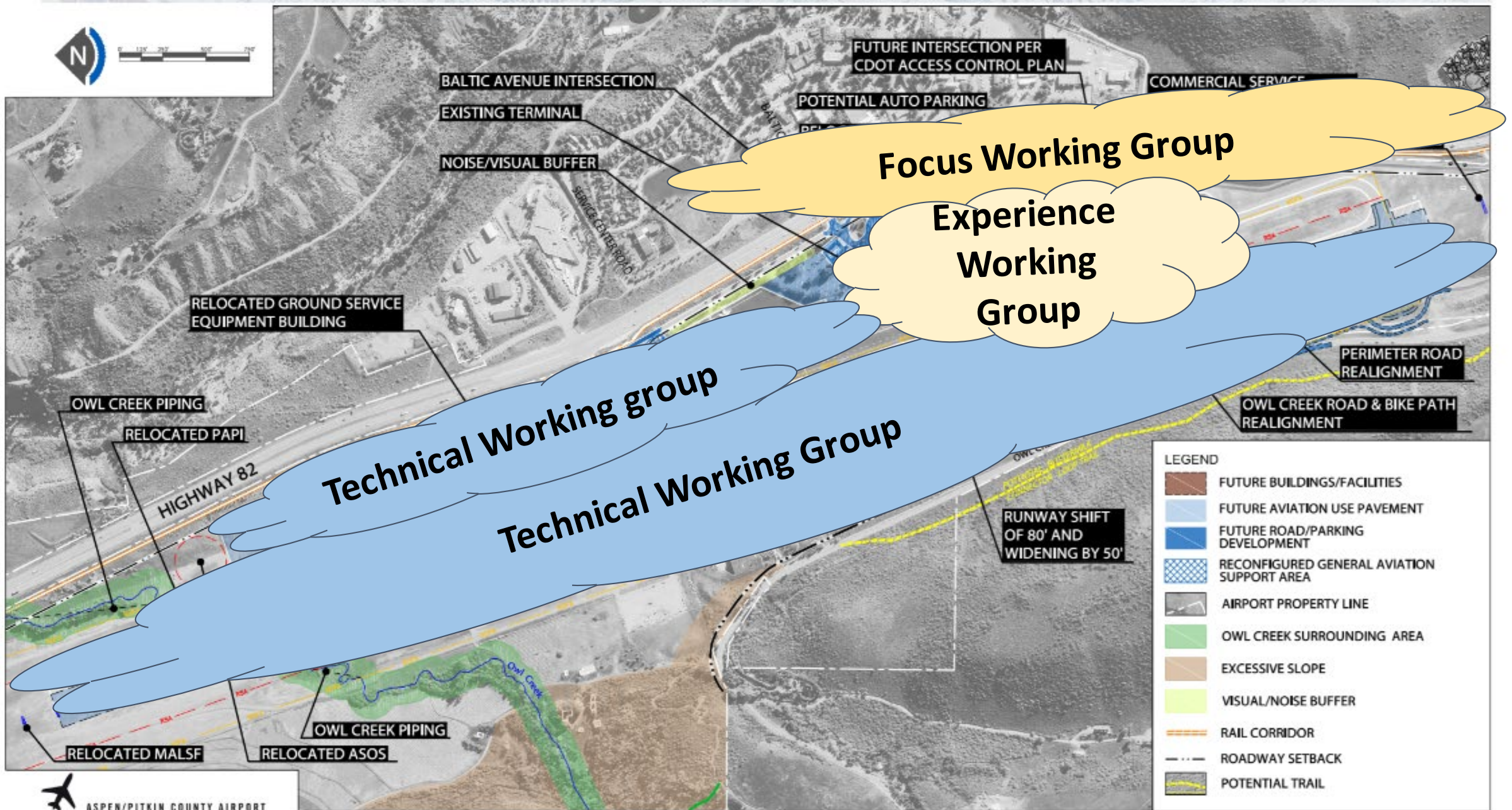


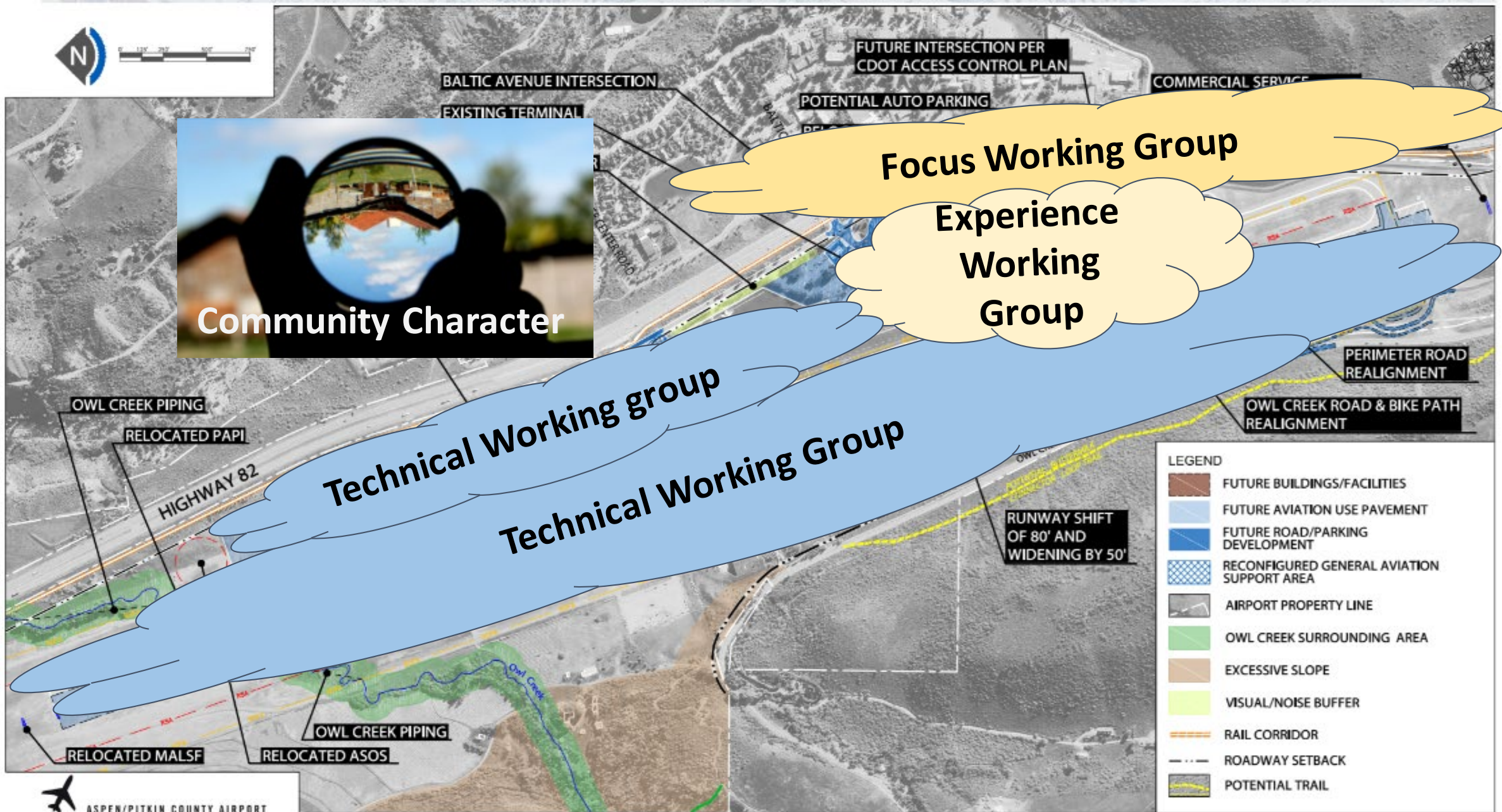


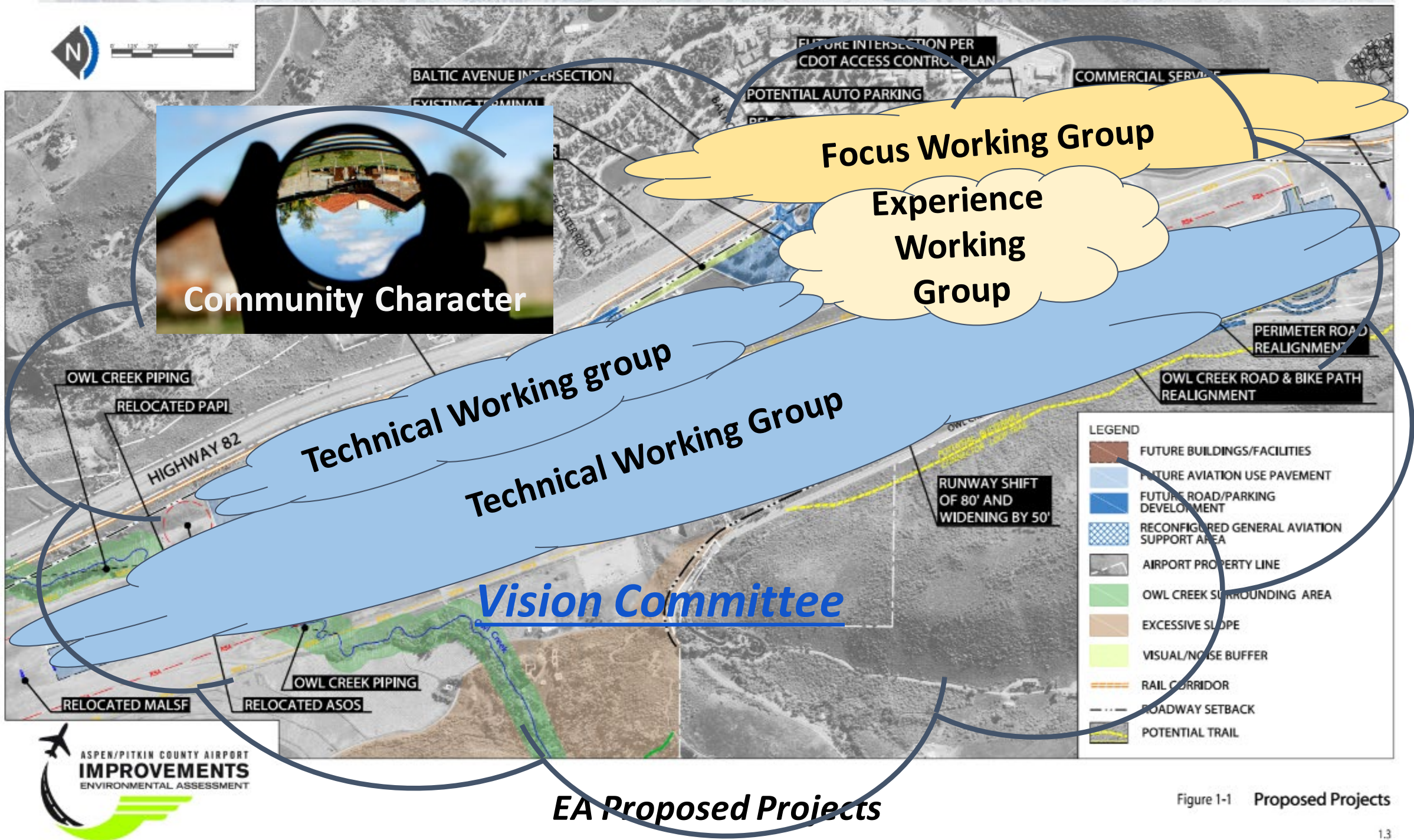


Experience Working Group









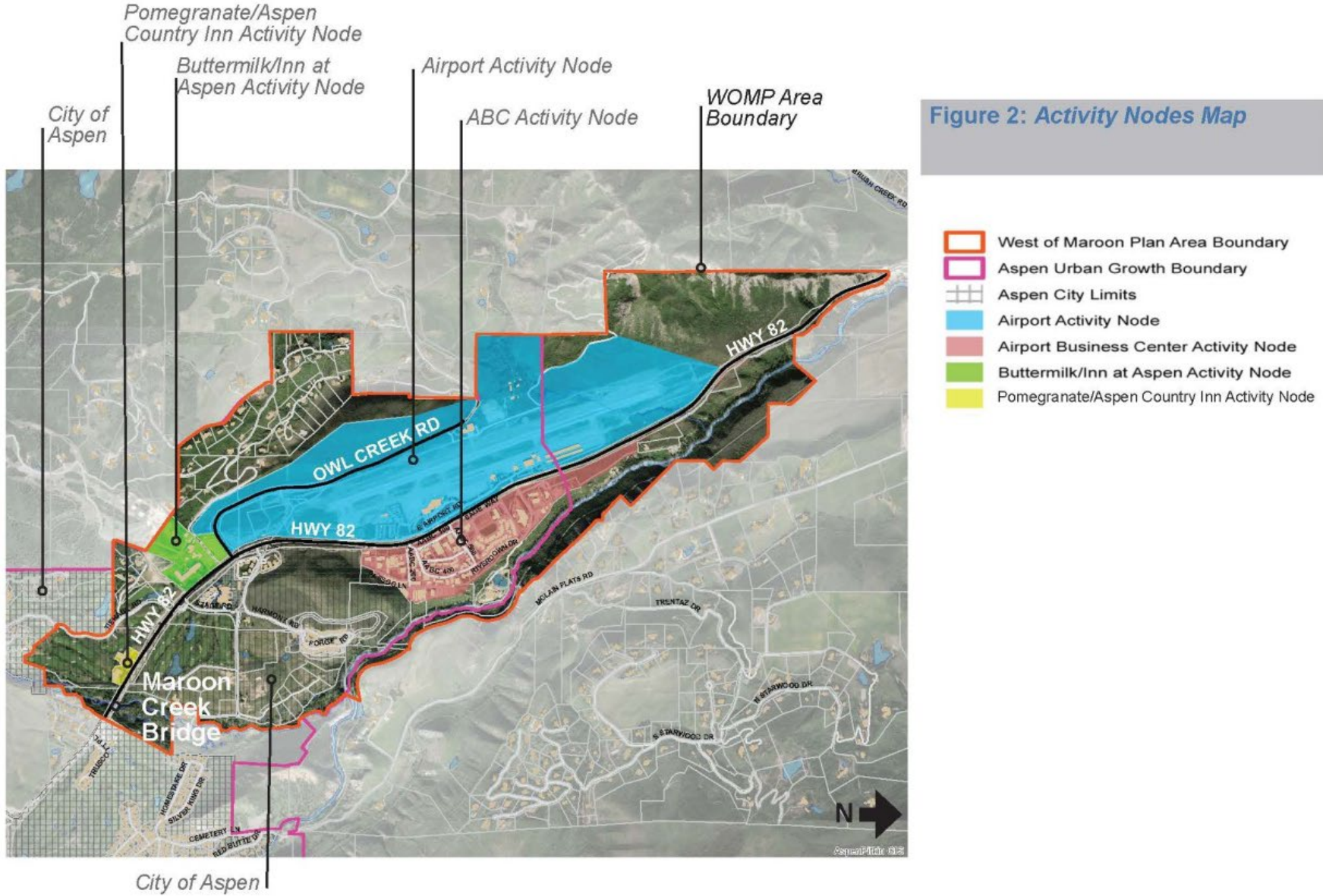
Guiding Principles

- Reduce overall airport emissions (aircraft & facilities) by 20-30% [Target for Overall Airport Emissions]
- Reduce noise levels by 20-30% [Target for Airport Noise Intensity]
- Accommodate limited growth [Airport Commercial Enplanement Target of . 8%]

ASE COMMUNITY VALUES SUMMARY





- Safety in the Air and on the Ground
- Adaptable, Flexible, Future-Proof
- Environmental Responsibility
- Community Character – Reflect local culture and values
- Economic Vitality
- Warm and Welcoming
- Design Excellence
- Efficiency – an airport that works well
- Preserve High Quality of Life
- Convenient and Easy Ground Transportation

Plan Boundary/HWY 82 Corridor Activity Nodes



Airport Node-Transportation Policy/Action Items

Figure 11: Pitkin County Airport Activity Node Location Map

-  West of Maroon Plan Area Boundary
-  Aspen Urban Growth Boundary
-  Aspen City Limits
-  Airport Activity Node

